



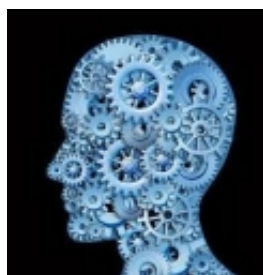
A brief news update from Interface.



 [Friend on Facebook](#)

 [Follow on Twitter](#)

 [Forward to a Friend](#)



New e-learning package!

If you prefer to use eLearning to increase your skills, check out our new e-learning package **“Tools to support work with families”**. At your convenience you will have access to over 8 hours of high quality content and comprehensive information about how tools support work with families and support to construct and use Genograms, Chronologies, Eco maps, Timelines and the outcomes star.

It's half the price of a standard course! Find out more [here](#).

Children 'find ways to cope' with domestic violence

Researchers at the University of Northampton found that children develop complex, creative ways to manage and cope with domestic violence. They are not just “passive observers”, but find complex, creative ways to manage and cope with what they have experienced, and have the capacity to be strong and resilient.

More details [here](#).

Children Society report on failings for migrant children

A report by The Children's Society found that thousands of migrant children entering the UK on their own are being failed by government because they are not getting long-term support and that they are left "destitute and in limbo" on leaving the care system when they turned 18.

Click [here](#) for more.

Continued drop in the number of children approved for adoption

Statistics published by the Adoption Leadership Board show that between January and March this year



Events Diary

We have a range of fabulous training lined up for Autumn 2015!

OPEN TRAINING SERIES Convenient and easy to sign up to, our range of stimulating open courses will run throughout this year, in Birmingham, Norwich, Newcastle and London. Courses include:

SUPERVISION - A practical 2 day programme aimed at managers responsible for providing supervision to teams and practitioners who are working with families with multiple and complex needs.

SKILLS TO WORK EFFECTIVELY WITH COMPLEX FAMILIES - A 2-day practical programme suitable for front line staff working on the Early Help/Troubled families agenda as well as school staff, those in early years settings, the VCS, Housing and Health.

CHILD SEXUAL EXPLOITATION - This one day course will both challenge and enlighten, leaving practitioners feeling empowered to carry out the necessary actions to prevent and protect children and young people from this form of abuse.

850 adoption placement orders were granted by the courts, which is an 11.5 % fall compared with October and December 2014.

Read why there is such a fall [here](#).

Police use new FGM control orders for the first time

On the day that control orders to protect girls from female genital mutilation, Bedfordshire Police used them to prevent two girls travelling to Somalia for the illegal operation.

Read more [here](#).

Debate about people who go missing regularly

Greater Manchester Police Chief Constable Sir Peter Fahy has said that young, vulnerable people may be better dealt with by social workers, rather than police officers.

National Police Chiefs' Council Lead for Missing People, Chief Constable Mike Veale responds: "Chief Constable Sir Peter Fahy has stimulated an important debate. When children and adults go missing it is almost always a symptom of other challenges in their lives which they need support in addressing."

Read more [here](#).

Quarter of councils fail to monitor mental health of children in care

25% of local authorities are failing to adequately assess and monitor the mental health needs of looked-after children according to a report [Achieving Emotional Wellbeing for Looked-After Children](#).

Despite around a half of children in care in England and Wales having a diagnosable mental health disorder, they

For the training schedule click [here!](#)

found that a quarter of councils had made either "very little" or "no mention" of looked-after children's mental health in their published strategies.

See the findings [here](#).



[Teachers working on National Citizen Service](#)

The National Citizen Service (NCS) programme is to link up with Teach First in a bid to create thousands more mentors and leaders for the government's flagship youth programme.

Click [here](#) for more information.



[Care leavers ask for more support for longer](#)

The report from Access All Areas, a coalition of leading youth charities, shows that care leavers want support up to the age of 25, whether or not they are in education or training, and also more support for those in prison.

Click [here](#) for more.



[Ofsted joint inspections create more pressure on children's services](#)

Plans to introduce joint inspections of child protection services will add greater pressure to already stretched services, it has been claimed.

Read more [here](#).

[follow on Twitter](#) | [forward to a friend](#)

Copyright © 2015 Interface, All rights reserved.

MailChimp

[unsubscribe from this list](#) | [update subscription preferences](#)